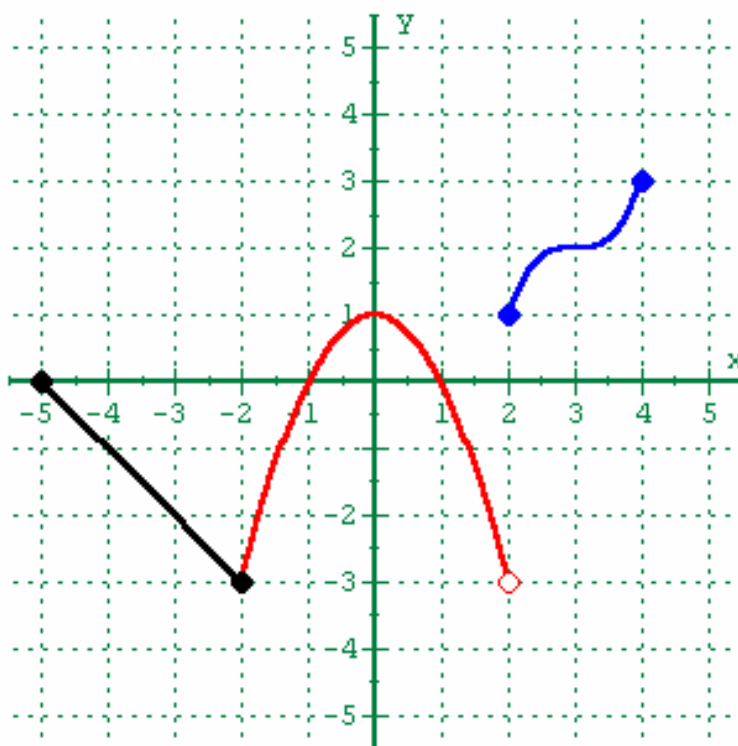


Piecewise-Defined Functions 1



$$f(x) = \begin{cases} -x - 5 & \text{for } -5 \leq x \leq -2 \\ -x^2 + 1 & \text{for } -2 < x < 2 \\ (x - 3)^3 + 2 & \text{for } 2 \leq x \leq 4 \end{cases}$$

Find $f(-4)$

$f(-2)$

$f(2)$

$f(0)$

Find the x-intercept(s)

Find the y-intercept(s)

Domain:

Range:

Maximum:

Minimum

Find the Interval(s) on x where the function is:

Increasing:

Decreasing:

Constant: